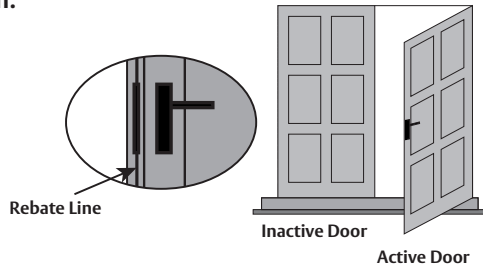


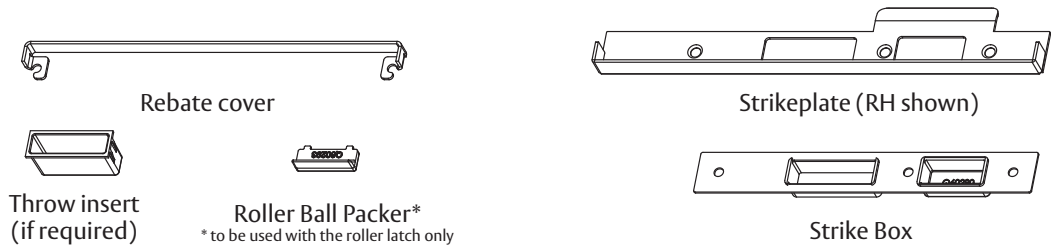
Application:



Tools Required:

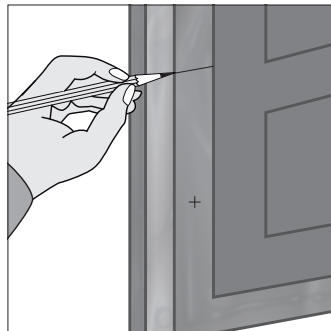
- 10mm drill bit
- 17mm drill bit
- 20mm drill bit
- Chisel
- Drill for screw pilot holes

Components:



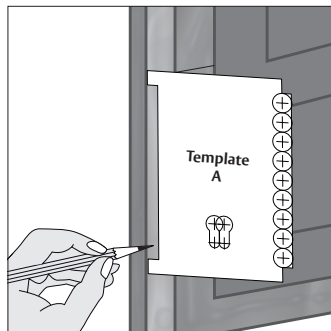
Step 1. Locating the Lock Site

- On the active door (door that opens first) select the desired height for the lock (normally 915mm from floor to centre of cylinder).
- Draw a horizontal guideline 154mm above cylinder centre along the face and edge of door.



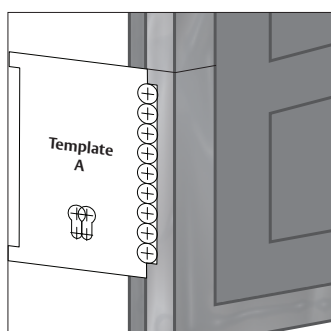
Step 2. Marking the Recess

- Prepare Template A by cutting around template and cutting out cross hatched area.
- Place Template A against end of door lining up top edge against guideline and side edge along rebate line.
- Trace the edge of the cut section onto the door
- Chisel out the marked recess down to the depth of the lower face.



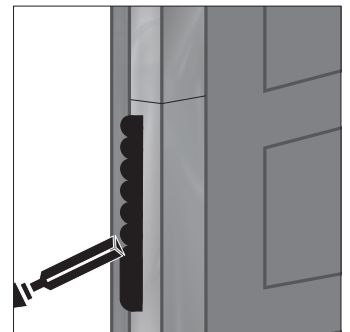
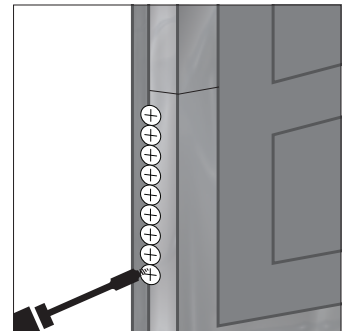
Step 3. Creating the Lock Cavity

- Place the opposite edge of Template A into the recess until it butts up against the edge of the cutout. Mark hole centres on given points.



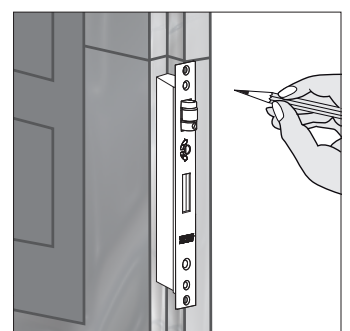
Step 3. Creating the Lock Cavity continued...

- **40mm Backset**
Using a 20mm drill bit, drill the holes to a depth of at least 60mm from the top face.
- **50mm Backset**
Using a 20mm drill bit, drill the holes to a depth of at least 70mm from the top face.
- Square off the drilled cavity with a chisel to accommodate the lock body.



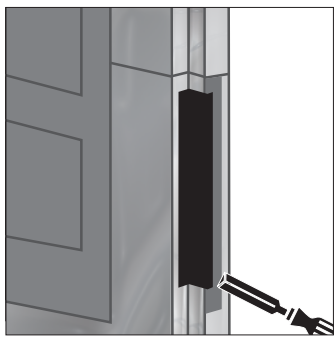
Step 4. Forend Plate Recess

- Locate the lock body within the cavity, with the faceplate on the top face. Make sure that the guideline lines up with the top edge of the lock forend plate.
- On the front edge of the door, mark around the forend plate and remove the lock body.



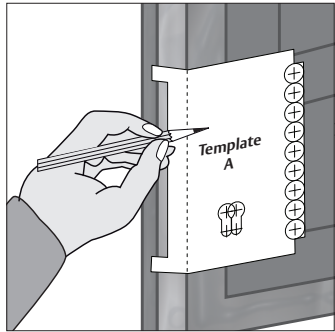
Step 4. Forend Plate Recess continued...

- Recess the marked area on the top face to a depth of 2mm and refit the lock to ensure that the faceplate is flush with the top face of the rebate.

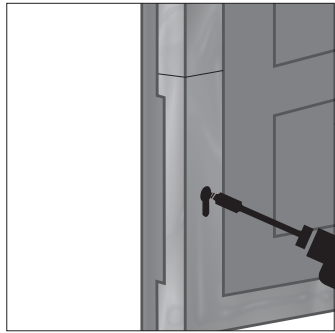


Step 5. Drilling the Cylinder Hole

- Fold Template A along the dotted line.
- Now mark the centre of the circles of the lock cylinder body according to your lock type (40/50 backset).

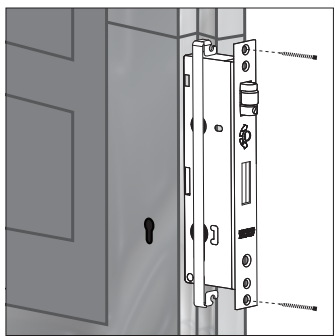


- Drill Two holes using a 17mm and 5mm drill bit from the outside of the door until they almost penetrate the inside surface of door. Then finish the hole by drilling from the inside of the door. Carefully chisel out the cylinder shape as determined by the template.



Step 6. Fitting the Lock

- Trial fit the rebate cover. Small recesses may need to be made to accommodate cover behind forend plate.
- Locate the rebate cover over the recess and place the lock body in the lock cavity. Line up the rebate cover holes with the lock and fasten with screws.



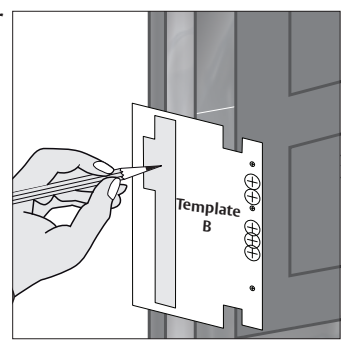
Step 7. Locating the Strike Site

- With both doors closed, draw a secondary guideline on the opposite door 30mm above the lock body guideline (as shown in white).

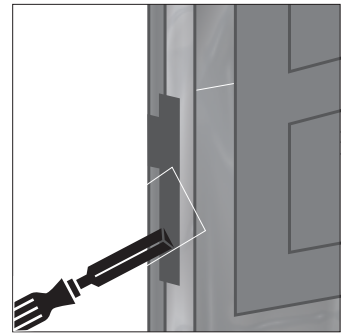


Step 8. Marking the Recess for Strike and Strike box

- Choose an appropriate Template B to match either right or left hand strike to be installed.
- Prepare Template B by cutting around outside edge and cutting out cross hatched area.
- With the door open, line up the top edge of Template B with the guideline, and the dotted line with the rebate line.

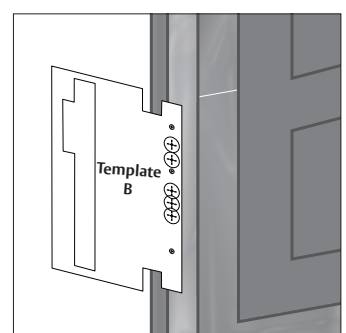


- Cut out the marked recess down to the depth of the lower face.
- Trial rebate strike in cavity - recess further if required.



Step 9. Creating the Strike Cavity

- Place the other edge of Template B into the recess until it butts against the edge of the recess. Mark hole centres and fixing screw points on given points.



- Using a 20mm drill bit, drill the holes to a depth of 15mm if not using throw insert or at least 25mm from the top face if using throw insert.

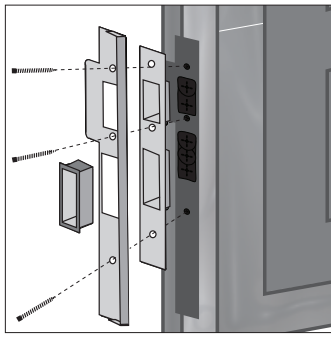


- Chisel strike box cavities to square off.
- Install strike box and mark chisel around. Recess down with chisel 1mm to accommodate strike box.



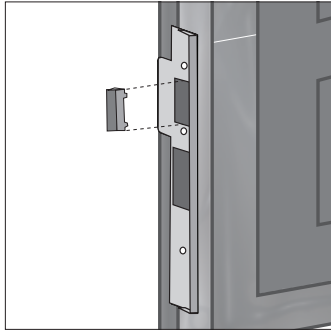
Step 10. Fitting the Strike box and Strike

- Fit the box and strike into the recess with the upstand facing into the rebated edge. Fasten the strike with screws.
- Install throw box insert if required.



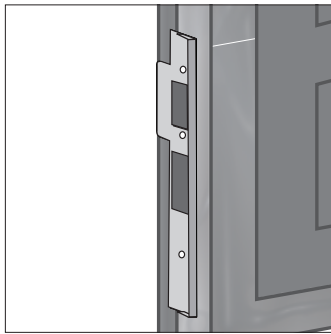
Step 10a. Fitting the Packer

- When a Roller Ball Latch lock is fitted, press supplied packer into latch pocket in strike box.
- Ensure angled side is orientated to the side the tongue of the strike is on.



Step 11. Test installation

- Test the lock for correct operation.



WARRANTY

ASSA ABLOY New Zealand Ltd ("ASSA ABLOY") guarantees its products against defects in workmanship and materials.

If within 10 years of purchase a product is found to be defective, ASSA ABLOY will supply the same or equivalent product free of charge.

All electrical and electronic components used in ASSA ABLOY's range of products excluding batteries are guaranteed for a period of 12 months from the date of proof of purchase, unless stated otherwise.

ASSA ABLOY assumes no liability under the guarantee for the following:

1. Improper installation or failure to follow fitting instructions.
2. Failure due to improper maintenance.
3. Fair wear and tear.
4. Indirect or consequential loss or damage.
5. Cost of removal and/or replacement.
6. Cost of freight and/or travelling time.
7. Damage to or deterioration of plated finishes (soft finishes). As deterioration is possible under some environmental conditions, these finishes are excluded from this guarantee.
8. Any modification or repairs to a product, as supplied, unless authorised by ASSA ABLOY.
9. Use of replacement parts other than authorised parts.
10. Malfunction or failure of the product due to the use of non-genuine ASSA ABLOY parts.

Nothing in the ASSA ABLOY New Zealand Limited Warranty excludes, restricts or modifies any condition, warranty, right or liability implied or protected by law where to do so would render the Warranty, or any part of it, void.

10 YEAR WARRANTY